

2 μm to 100 μm Measurement Range Allows Monitoring of Coarse Particles



NEW

Liquid-Borne Particle Sensor **KS-42D**

- Detects particles down to 2 μm size, at a flow rate of 25 mL per minute
- Eight particle size ranges (8 channels, factory default setting)
- $\geq 2 \mu\text{m}$, $\geq 3 \mu\text{m}$, $\geq 5 \mu\text{m}$, $\geq 7 \mu\text{m}$, $\geq 10 \mu\text{m}$, $\geq 25 \mu\text{m}$, $\geq 50 \mu\text{m}$, $\geq 100 \mu\text{m}$ (Up to 150 μm available as option)
- Integrated leak sensor with alarm output
- User selectable channels within measurement range (using KE-40B function)

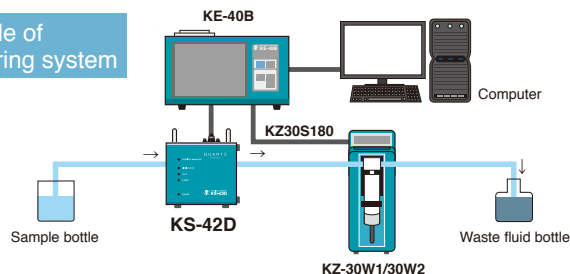


KS-42D

Specifications [KS-42D]

Optical system	Light-scattering method
Light source	Laser diode (wavelength 780 nm, rated output 5 mW)
Laser product classification	Class 1, IEC 60825-1: 2001
Light detector	Photodiode
Fluid contact materials	Synthetic quartz, PFA, perfluoro (fluorocarbon rubber)
Allowable sample fluid types	Fluids which do not corrode the fluid contact materials
Calibration	Polystyrene latex spheres with refractive index 1.6 in pure water
Particle size range	
8 channels (factory default)	≥2 μm, ≥3 μm, ≥5 μm, ≥7 μm, ≥10 μm, ≥25 μm, ≥50 μm, ≥100 μm (≥150 μm support available as option)
User selectable channels	1 to 10 channels, setting made from Controller
Setting range	2 μm to 100 μm
Count efficiency	100 ±20 %
Sample flow rate	25 mL/min
Maximum particle concentration	10 000 particles/mL (coincidence loss 10 % for 10 μm particles)
Allowable sample fluid pressure	-80 to 300 kPa (gauge pressure)
Sample fluid connectors	Sample fluid inlet / outlet 2 x 4 dia. flared tube joint
Input/output connectors	
CONTROLLER connector	Connecting to KE-40B
LIQUID LEAK ALARM connector	Alarm output terminal shorted during normal operation. open when internal leak is detected
Power supply	DC12 V (supplied from KE-40B)
Ambient conditions for operation	5 °C to 40 °C, less than 90 % RH (no condensation)
Dimensions and weight	125 (H) x 140 (W) x 150 (D) mm (excluding protruding parts), Approx. 2.2 kg
Supplied Accessories	Tube A vacuum pack x 1 (2 x 4 dia. PFA tube with flared joint at one end, 1.5 m x 2, Union joint x 1)
Optional accessories	Sensor Stand KS-42-S39

Example of measuring system

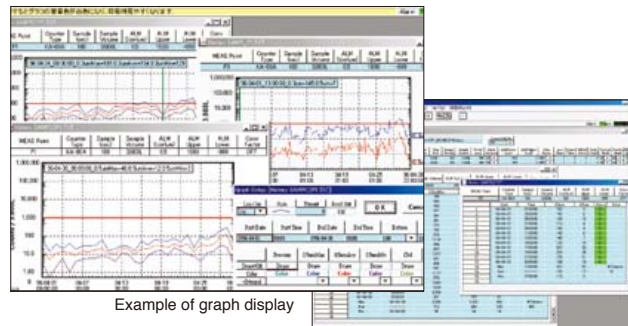


RP monitor K9461 Ver. 2

Enables automatic control of particle counter, data collection, real-time graph display, filing and printout using a computer

- Enables data processing using spreadsheet software (Windows Excel, etc.)
- Enables one-to-one control of RION particle counters in the RS-232C mode

Compatible OS: Microsoft Windows 2000/XP



Example of graph display

Example of numeric list

Syringe Sampler KZ-30W1/30W2

For batch measurement of liquid-borne particle sensor

*Connecting cable (KZ30S180, optional)



For operational control of particle sensor and display of measurement data

Controller KE-40B **NEW**

- Particle size range can be set arbitrarily up to 10 channels
- Printer is built in. Data can be stored in a memory card (CF card)



Specifications [KE-40B]

Display	
Display items	Particle size range (max.10 channels), Count (max. 8 digits)
Operating portion	Touch panel, Sheet switch
Measurement	
Measurement time	10 sec. to 2 h, and manually
Measurement mode	Manual measurement Automatic measurement: mean value measurement, Periodic measurement, Scheduled time measurement
Alarm	When a measured value of a selected channel reaches or exceeds the set alarm level, a buzzer sounds and alarm terminals shorted by means of relay contact Maximum connected load: DC 30 V, 1 A
Communication	RS-232C
Printer	Printout of measurement results, date and time
Recording paper	Thermal paper: TP-08, Clean thermal paper: TP-10
Memory	Compact flash (CF) card*(automatic storage in TSV format)
Power requirements	AC100 V to 240 V, 50/60 Hz, 75 VA
Dimensions and weight	140 (H) x 240 (W) x 150 (D) mm(excluding protrusions), Approx. 3.8 kg
Accessories	Power cord x1, Connecting cable (1 m) x1, Thermal paper TP-08 x2 rolls, Touch pen, Dummy card
Options	Communication cable CC-61A, Connecting cable (5 m) KE-40-125, Thermal paper TP-08, Clean thermal paper TP-10, Memory card(128 MB) MC-12CF1/(256 MB)MC-25CF1, CFcard adapter MC-CFADP
Factory option	D/A converter interface KE-40-S06

*Use only RION supplied cards for assured operation.

* Company names and product names mentioned in this catalog are usually trademarks or registered trademarks of their respective owners.
* Specifications subject to change without notice.



Distributed by:



3-20-41, Higashimotomachi, Kokubunji,
Tokyo 185-8533, Japan
Tel: +81-423-59-7878, Fax: +81-423-59-7458