

A wide measurement range of particle from 0.2 μm to 2.0 μm .
 Measurements can be made using only small amounts of
 samples due to high counting efficiency.



NEW

Liquid-borne Particle Sensor KS-42B/42BF [Compatible with Hydrofluoric acid]

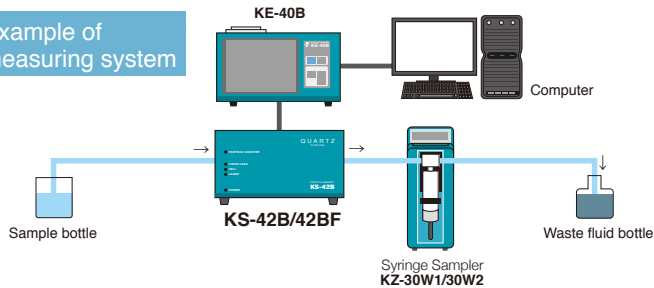
- Minimum particle size of 0.2 μm ,
 sample flow rate of 10 mL/min
- Particle size range (5 channels, factory default setting)
 $\geq 0.2 \mu\text{m}$, $\geq 0.3 \mu\text{m}$, $\geq 0.5 \mu\text{m}$, $\geq 1.0 \mu\text{m}$, $\geq 2.0 \mu\text{m}$
- Leakage detector built-in
 Outputs alarm when internal leak detected
- A sapphire flow cell is used in KS-42BF
- Channel size change possible within range of sensor
 (using KE-40B)



Specifications [KS-42B/42BF]

Optical system	Light-scattering method
Light source	Laser diode (wavelength 780 nm, rated output 40 mW)
Laser product class	Class 1, IEC 60825-1 : 2001
Light detector	PIN type photodiode
Materials of parts exposed to sample fluid	KS-42B: Synthetic quartz, PFA, PTFE KS-42BF: Sapphire, PFA, PTFE
Allowable sample fluid types	Any liquid that does not corrode contacting materials
Calibration	Polystyrene latex (PSL) particles (refractive index 1.6) in pure water
Particle size range	
5 channels (factory default setting)	$\geq 0.2 \mu\text{m}$, $\geq 0.3 \mu\text{m}$, $\geq 0.5 \mu\text{m}$, $\geq 1.0 \mu\text{m}$, $\geq 2.0 \mu\text{m}$
Arbitrary setting	Arbitrary setting from 1 channel to 10 channels. Setting is done by the controller
Setting range	0.2 μm to 2.0 μm
Counting efficiency	KS-42B, KS-42BF: 70 % to 110 %
Sample flow rate	10 mL/min
Maximum particle number concentration	1 200 particles/mL (at 5 % coincidence loss for 0.2 μm particles)
Temperature range of samples	+15 °C to +35 °C (no condensation in the cell part)
Allowable sample fluid pressure	300 kPa (gauge pressure) or less
Sample fluid connector	Sample inlet/outlet: 2 (dia.) x 4 (dia.) flared joint for tube
Purge connector	Rc1/8 (1/8 PT female screw)
Input/output connector	
CONTROLLER connector	Connecting to KE-40B
LIQUID LEAK ALARM connector	Alarm output terminal shorted during normal operation open when internal leak is detected
Power requirements	DC12 V (supplied by KE-40B)
Ambient conditions for operation	+15 °C to +35 °C, less than 85 % RH (no condensation)
Dimensions and weight	125(H) x 240(W) x 151(D) mm (excluding protrusions), Approx. 3.2 kg
Accessories	Vacuum packaged tube A x1 (Two 2 (dia.) x 4 (dia.) PFA tubes 1.5 m long with one end flared, a union joint)

Example of measuring system

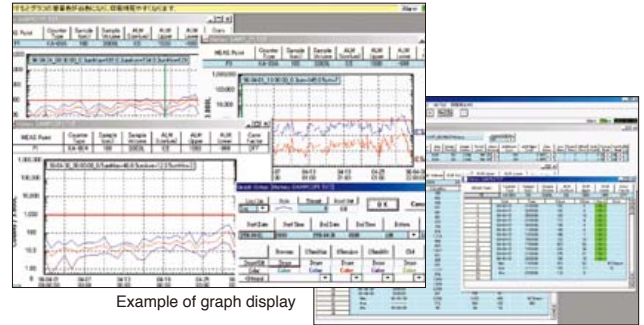


RP monitor K9461 Ver. 2

Enables automatic control of particle counter, data collection, real-time graph display, filing and printout using a computer

- Enables data processing using spreadsheet software (Windows Excel, etc.)
- Enables one-to-one control of RION particle counters in the RS-232C mode

Compatible OS: Microsoft Windows 2000/XP



Example of graph display

Example of numeric list

Syringe Sampler
KZ-30W1/30W2

For batch measurement of liquid-borne particle sensor

*Connecting cable (KZ30S180, optional)



For operational control of particle sensor and display of measurement data

Controller KE-40B **NEW**

- Particle size range can be set arbitrarily up to 10 channels
- Printer is built in. Data can be stored in a memory card (CF card)



Specifications [KE-40B]

Display	
Display items	Particle size range (max.10 channels), Count (max. 8 digits)
Operating portion	Touch panel, Sheet switch
Measurement	
Measurement time	10 sec. to 2 h, and manually
Measurement mode	Manual measurement Automatic measurement: mean value measurement, Periodic measurement, Scheduled time measurement
Alarm	When a measured value of a selected channel reaches or exceeds the set alarm level, a buzzer sounds and alarm terminals shorted by means of relay contact Maximum connected load: DC 30 V, 1 A
Communication	RS-232C
Printer	Printout of measurement results, date and time
Recording paper	Thermal paper: TP-08, Clean thermal paper: TP-10
Memory	Compact flash (CF) card*(automatic storage in TSV format)
Power requirements	AC100 V to 240 V, 50/60 Hz, 75 VA
Dimensions and weight	140 (H) x 240 (W) x 150 (D) mm(excluding protrusions), Approx. 3.8 kg
Accessories	Power cord x1, Connecting cable (1 m) x1, Thermal paper TP-08 x2 rolls, Touch pen, Dummy card
Options	Communication cable CC-61A, Connecting cable (5 m) KE-40-125, Thermal paper TP-08, Clean thermal paper TP-10, Memory card(128 MB) MC-12CF1/(256 MB)MC-25CF1, CFcard adapter MC-CFADP
Factory option	D/A converter interface KE-40-S06

*Use only RION supplied cards for assured operation.

* Company names and product names mentioned in this catalog are usually trademarks or registered trademarks of their respective owners.

* Specifications subject to change without notice.

ISO 14001 RION CO., LTD.
ISO 9001 RION CO., LTD.



Distributed by:

RION CO., LTD.
<http://www.rion.co.jp/english/>

3-20-41, Higashimotomachi, Kokubunji,
Tokyo 185-8533, Japan
Tel: +81-423-59-7878, Fax: +81-423-59-7458